



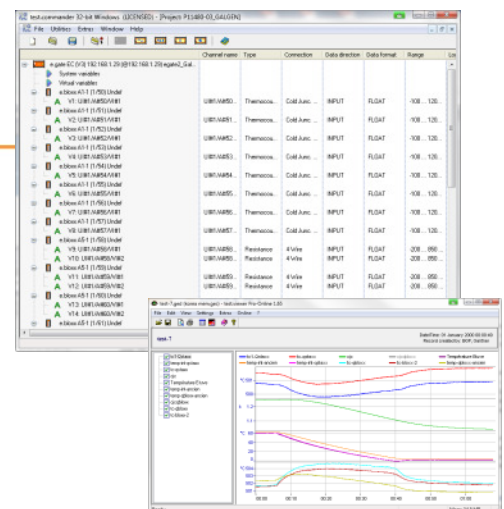
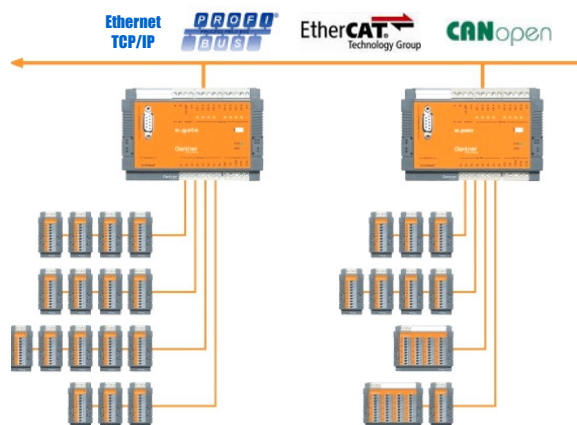
The e.bloxx series is designed for industrial and experimental test systems requiring precise high speed measurement of electrical, thermal, and mechanical quantities in engine and component test beds.

All units are based on a clean modular design, and easily connect to the wide variety of field devices used in today's test beds. Sample rates up to 1000 Hz and resolutions up to 19 bit are possible depending on the module and signal type used. Standardized communication protocols (Profibus-DP and Modbus-RTU) allow the e.bloxx family to work with a wide variety of application hardware and software.

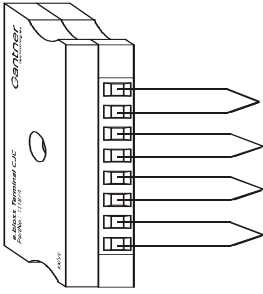
Adding an e.series Test Controller dramatically increases the system's throughput and connectivity options. An e.series Test Controller is a data concentrator, communication gateway, and optionally a Programmable Automation Controller (PAC) with 100Mbps Ethernet, Profibus-DP, EtherCAT, or CANopen.

Most important features:

- **Robust Aluminium Housing**
- **e.bloxx Terminal CJC**  
Cold junction compensation for the measurement with thermocouples, very good thermal conduction
- **e.bloxx Terminal 4C**  
Connection of current signals and current sensors (e.bloxx A3)
- **e.bloxx Terminal B14-120**  
Connection of single strain gauges 120 Ω (e.bloxx A6)
- **e.bloxx Terminal B14-350**  
Connection of single strain gauges 350 Ω (e.bloxx A6)
- **e.bloxx Terminal B14-700**  
Connection of single strain gauges 700 Ω (e.bloxx A6)
- **e.bloxx Terminal B14-D**  
Connection of single strain gauges 120 Ω and 350 Ω (e.bloxx A6)
- **e.bloxx Terminal 4ISO-V2**  
Connection of 4 galvanically isolated inputs (e.bloxx D1)
- **Electromagnetic Compatibility**  
according to EN 61000-4 and EN 55011
- **Pluggable screw terminals**



## e.bloxx Terminal CJC

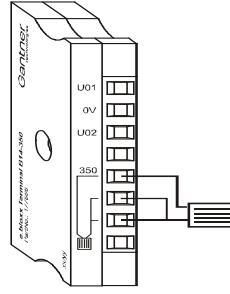


10/8 pole terminal for the connection of up to 4 thermocouples to the e.bloxx A1 and e.bloxx A4TC.

Cold Junction Compensation

Integrated thermo sensor:  
Pt1000, class A  
Accuracy 0.3 K

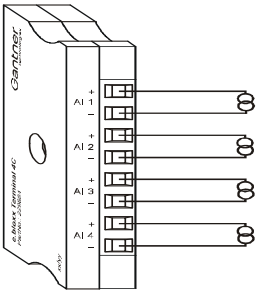
## e.bloxx Terminal B14-350



10/8 pole terminal for the connection of single strain gauges to the e.bloxx A6.

Resistance	350 Ω
Accuracy	0.05 %
Stability	5 ppm / K

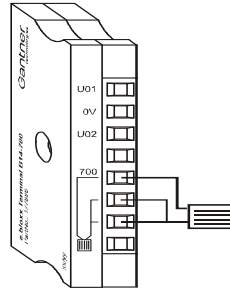
## e.bloxx Terminal 4C



10/8 pole terminal for the connection of up to 4 currents or sensors with current output to the module e.bloxx A3.

Shunt resistant	100 Ω
Max. power	0,25 W
Accuracy	0,1 %, TC 5
Input current	± 20 mA
Perm. CM Voltage	100 V DC

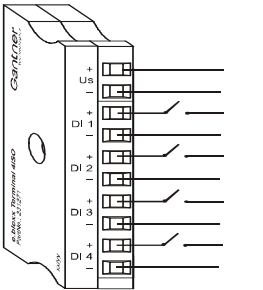
## e.bloxx Terminal B14-700



10/8 pole terminal for the connection of single strain gauges to the e.bloxx A6.

Resistance	700 Ω
Accuracy	0.05 %
Stability	5 ppm / K

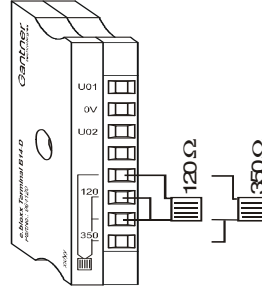
## e.bloxx Terminal 4ISO-V2



10/8 pole terminal for the galvanically isolated connection of up to 4 digital I/O signals to the e.bloxx D1

Switching frequency	max. 400 kHz
Input current	4.5 mA
Isolation voltage	500 V DC
Threshold high	> 10 V
Threshold low	< 2 V
Power supply	10 ... 30 VDC

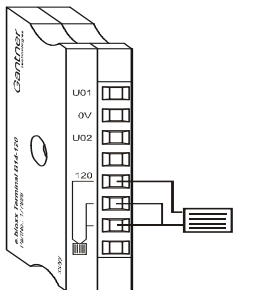
## e.bloxx Terminal B14-D



10/8 pole terminal for the connection of single strain gauges (120 Ω or 350 Ω) to the e.bloxx A6.

Resistance	120 Ω
	350 Ω
Accuracy	0.05 %
Stability	5 ppm / K

## e.bloxx Terminal B14-120



10/8 pole terminal for the connection of single strain gauges to the e.bloxx A6.

Resistance	120 Ω
Accuracy	0.05 %
Stability	5 ppm / K

## Warm Up Time

All declarations are valid after a warm up time of 45 minutes.

Valid from Nov. 2010. Specification subject to change without notice  
DB\_EBLOXX\_TERM\_E\_20.docx